

CURSO DE DESTINAÇÃO DE RESÍDUOS ELETROELETRÔNICOS

Edição Aracaju

Realização



Parceria



Apoiador Financeiro

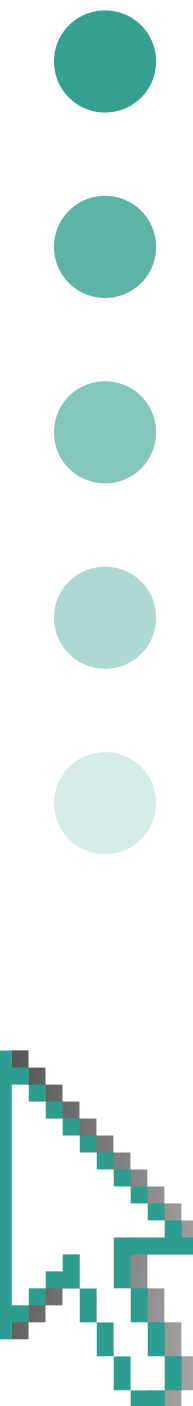
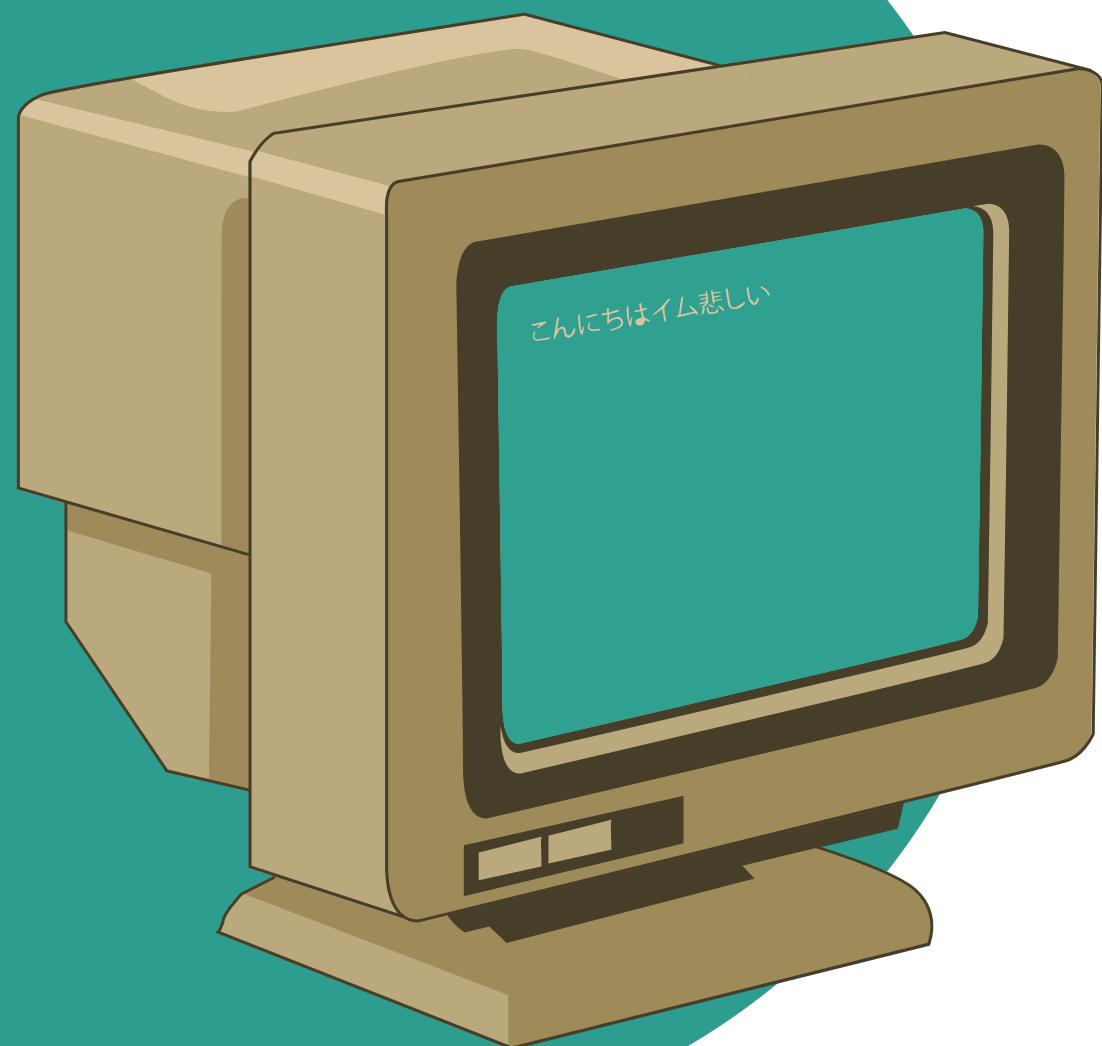


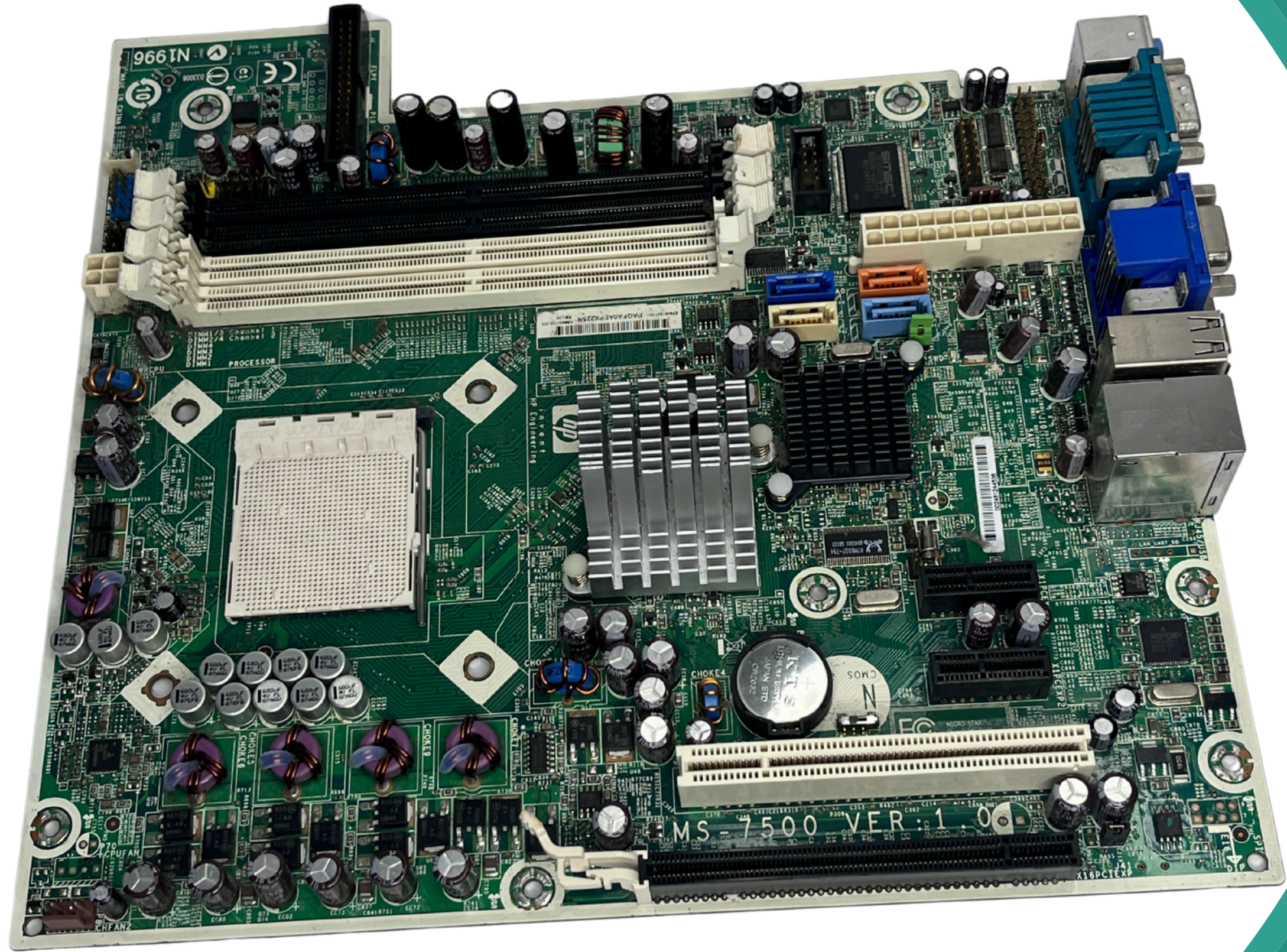
AULA 03

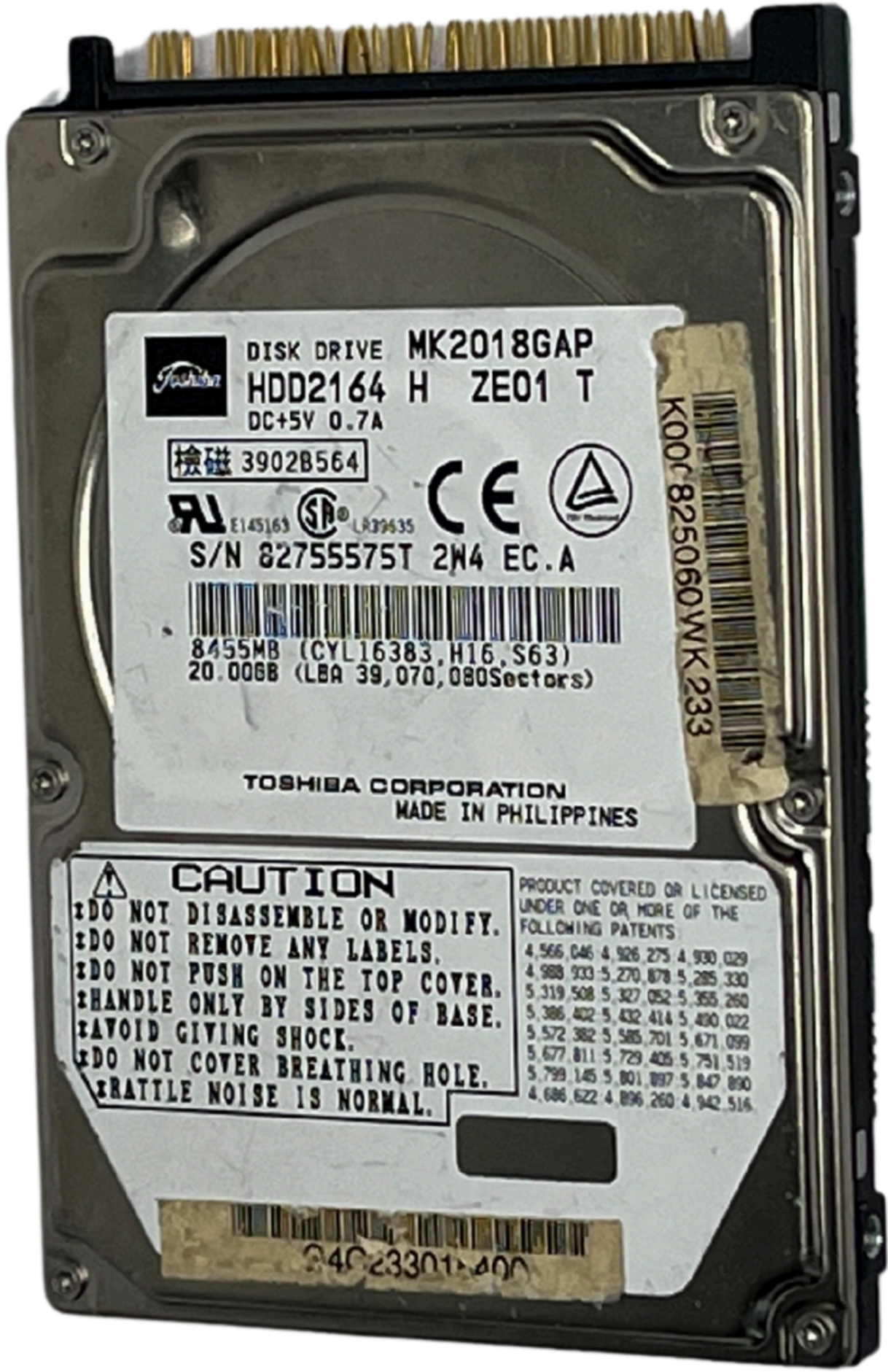
Desmontagem
e Revisão



Gincana da Classificação







DISK DRIVE MK2018GAP
HDD2164 H ZE01 T
DC+5V 0.7A
檢磁 3902B564
CE A
S/N 82755575T 2W4 EC.A
8455MB (CYL16383, H16, S63)
20.006B (LBA 39,070, 080Sectors)
TOSHIBA CORPORATION
MADE IN PHILIPPINES

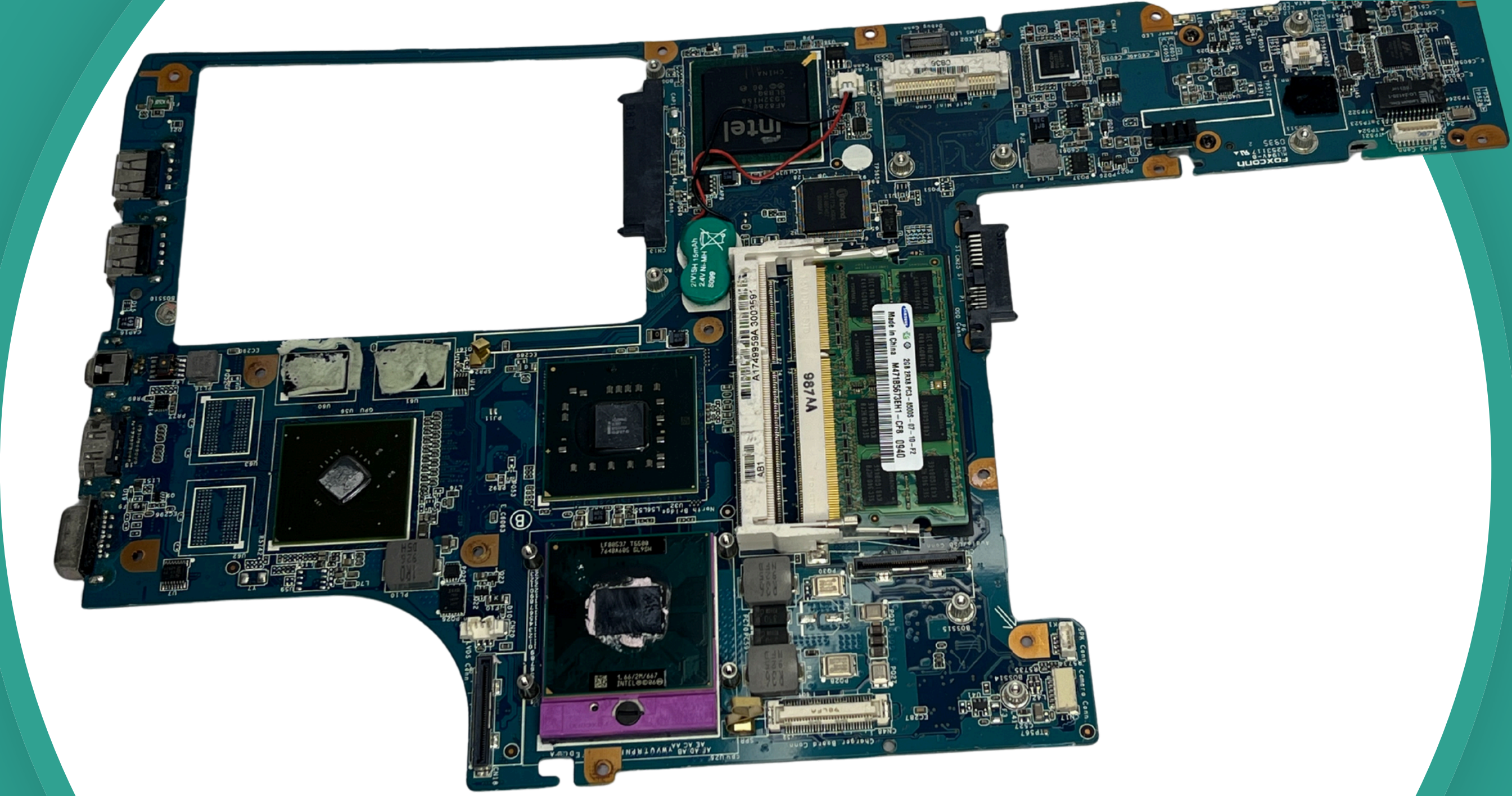
K00C-825060WK 233

CAUTION
DO NOT DISASSEMBLE OR MODIFY.
DO NOT REMOVE ANY LABELS.
DO NOT PUSH ON THE TOP COVER.
HANDLE ONLY BY SIDES OF BASE.
AVOID GIVING SHOCK.
DO NOT COVER BREATHING HOLE.
RATTLE NOISE IS NORMAL.

PRODUCT COVERED OR LICENSED
UNDER ONE OR MORE OF THE
FOLLOWING PATENTS:
4,566,046; 4,926,275; 4,930,029;
4,988,933; 5,270,878; 5,285,330;
5,319,508; 5,327,052; 5,355,260;
5,386,402; 5,432,414; 5,490,022;
5,572,382; 5,585,701; 5,671,099;
5,677,811; 5,729,405; 5,751,519;
5,799,145; 5,801,897; 5,847,890;
4,686,622; 4,896,260; 4,942,516.

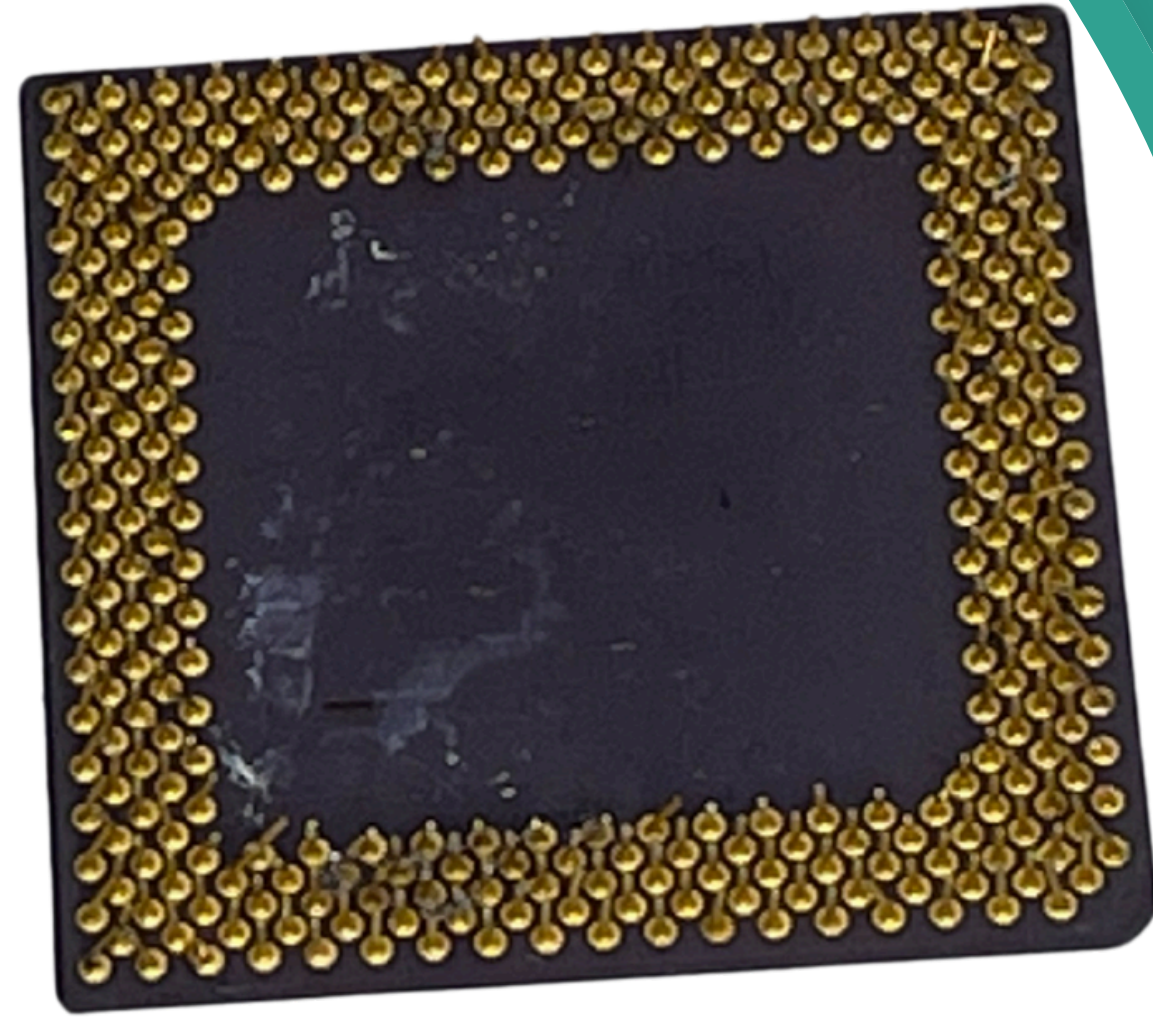
34023301-400

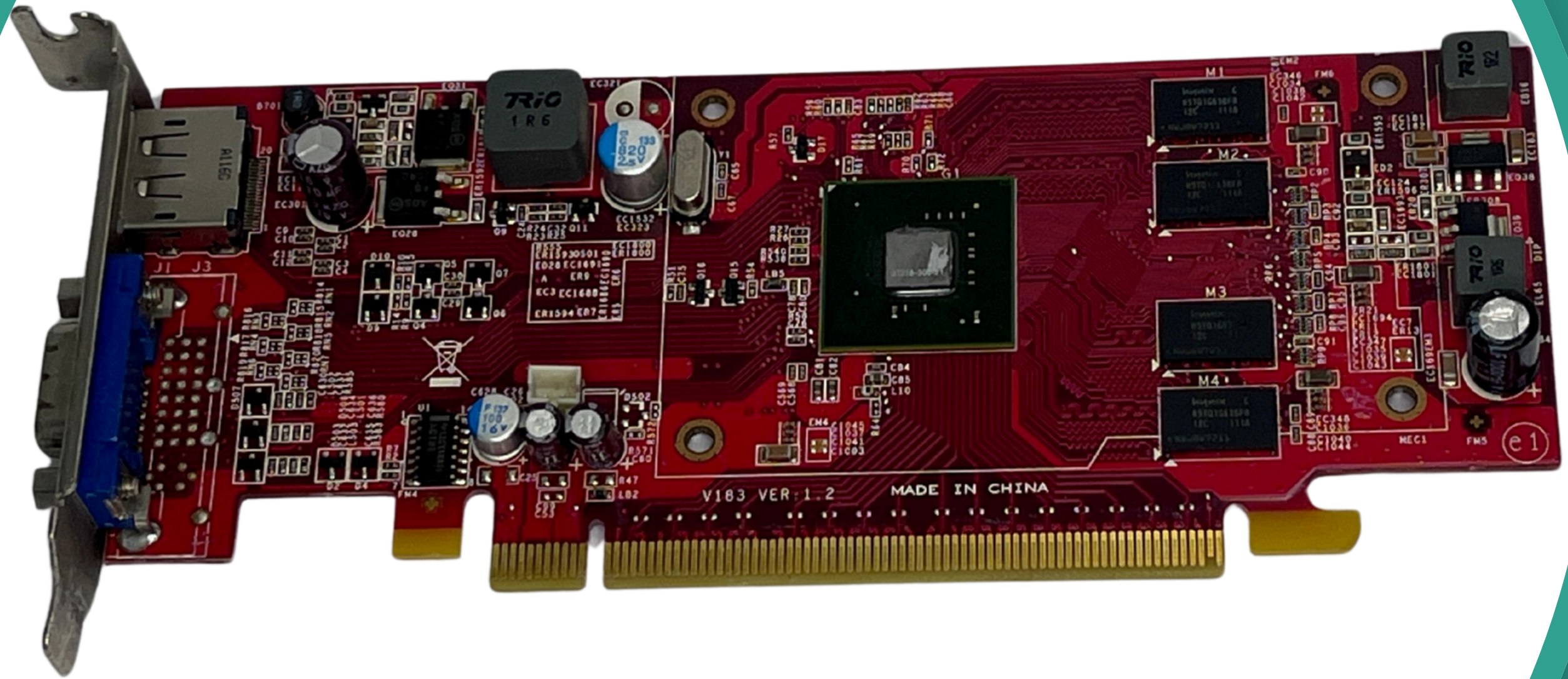


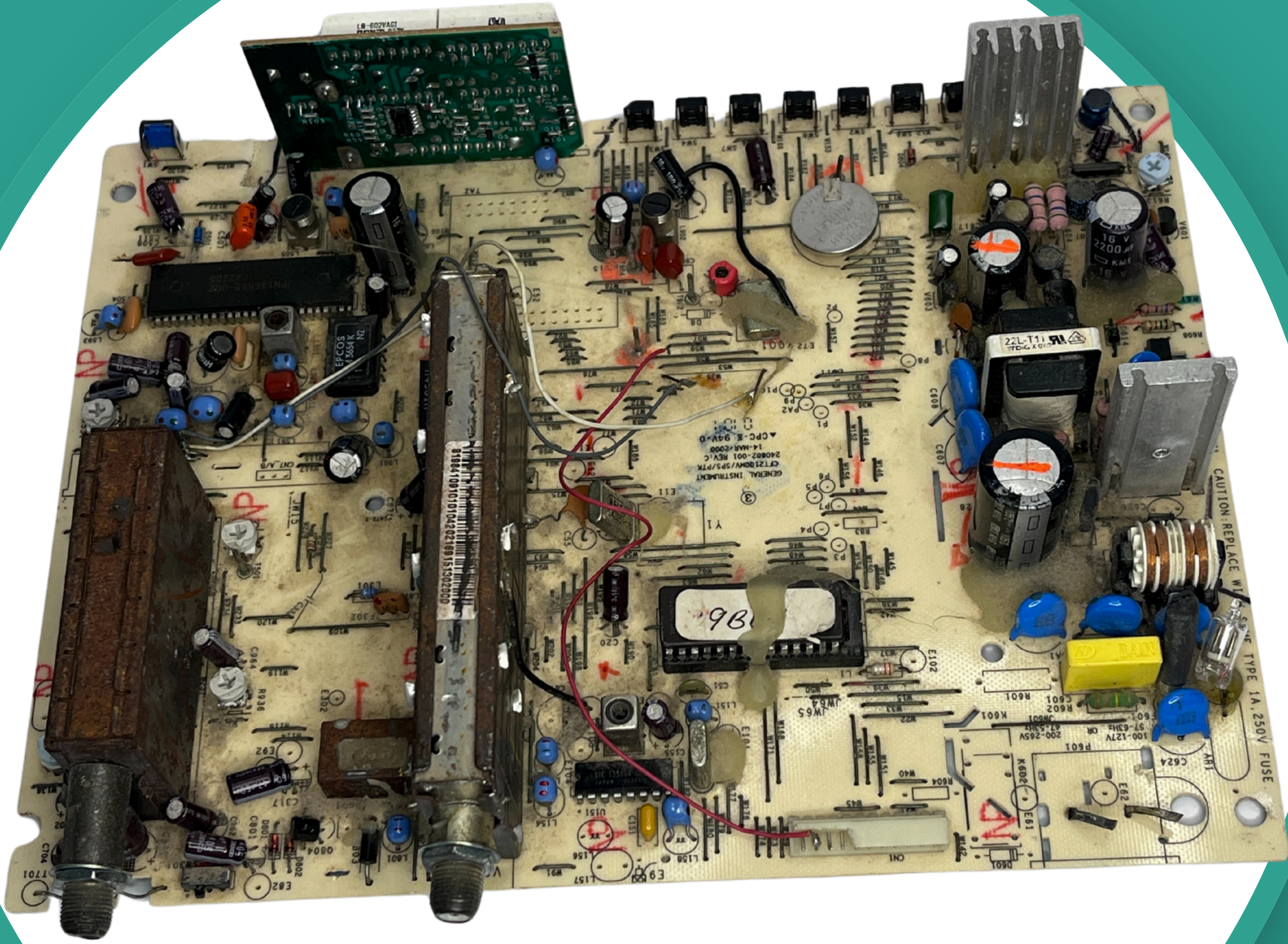




WARRANTY VOID IF REMOVED
1229900169200
64MB PC-100 CL-2
Made in Taiwan







98101010104202109151302000

GENERAL INSTRUMENT
CFT2100W/SP/TK
240802-001 REV. C
14-MAR-2008
A.C.P.C.-E. 94V-0

CAUTION REPLACE WITH SAME TYPE 1A, 250V FUSE

981

22L-T11
TDC X 015

EPCOS
E305A
N2

1B-602VAC1

100-DAN

100-12TV OR
200-265V
97-63Hz

100-12TV OR
200-265V
97-63Hz

100-12TV OR
200-265V
97-63Hz

100-12TV OR
200-265V
97-63Hz

100-12TV OR
200-265V
97-63Hz

100-12TV OR
200-265V
97-63Hz

100-12TV OR
200-265V
97-63Hz

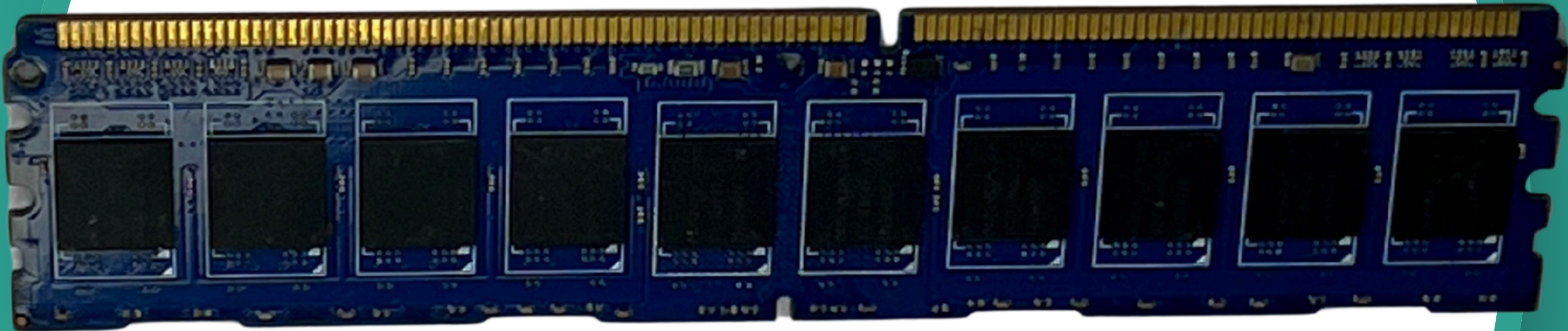
100-12TV OR
200-265V
97-63Hz

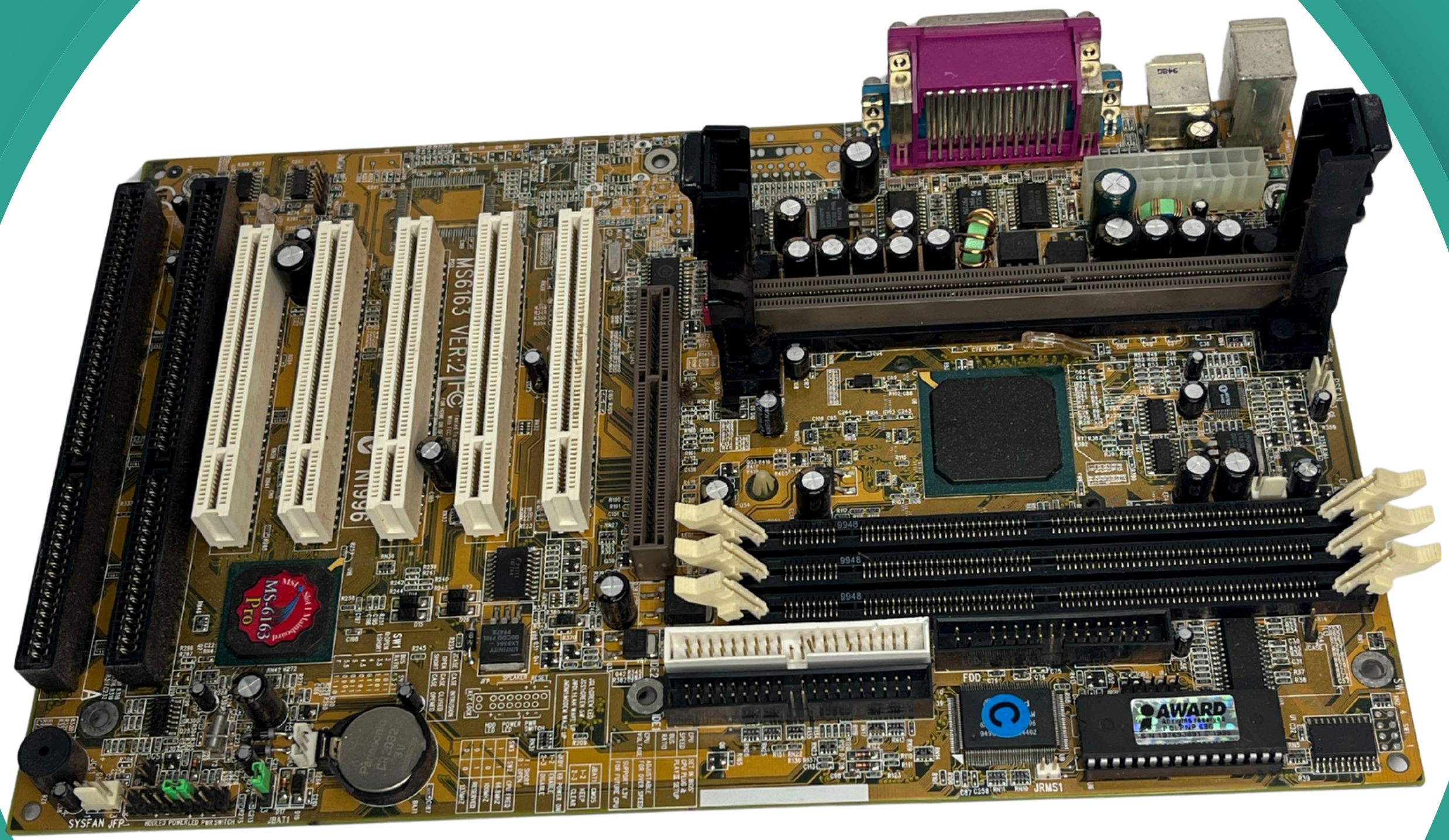
100-12TV OR
200-265V
97-63Hz

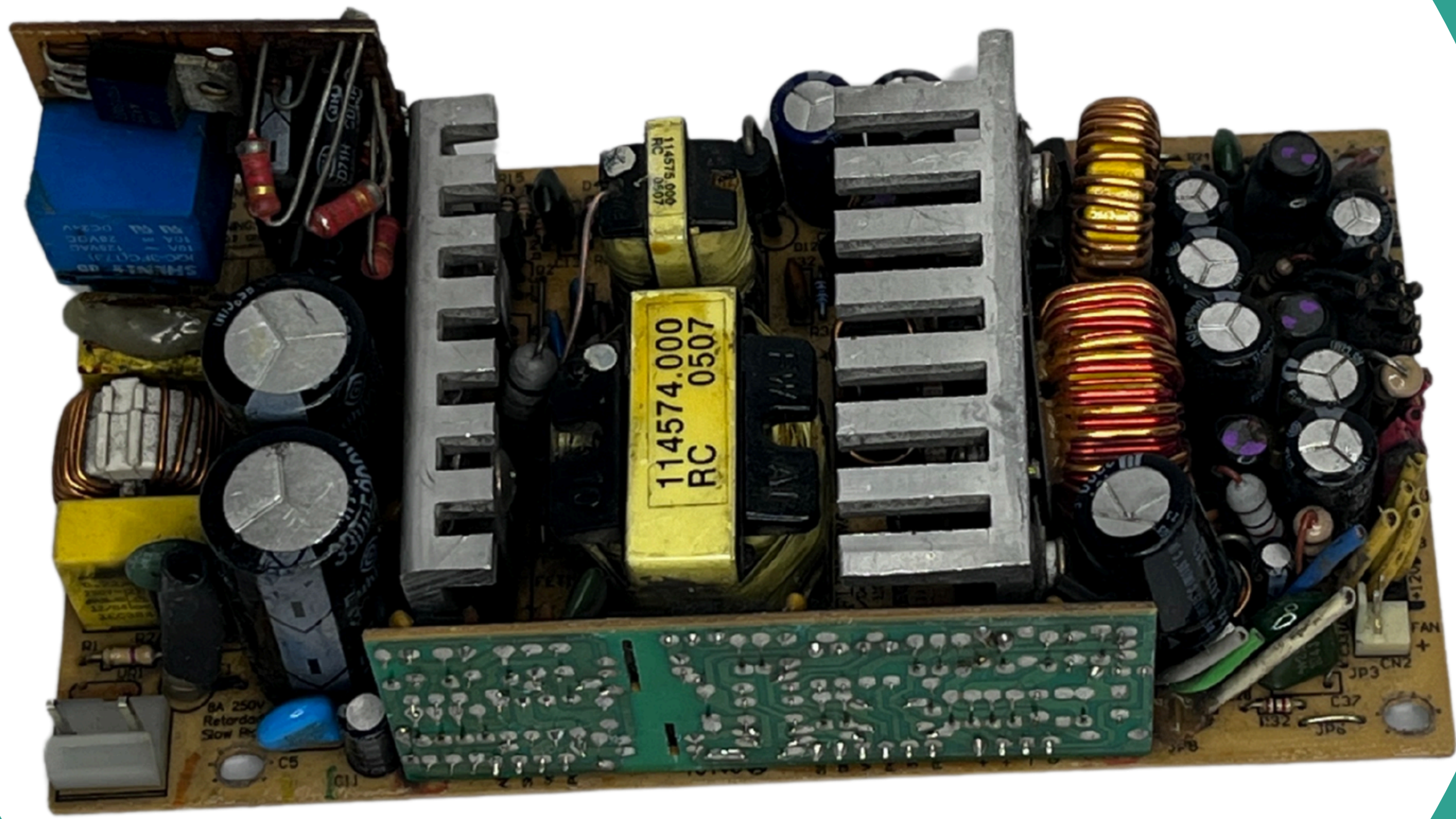
100-12TV OR
200-265V
97-63Hz

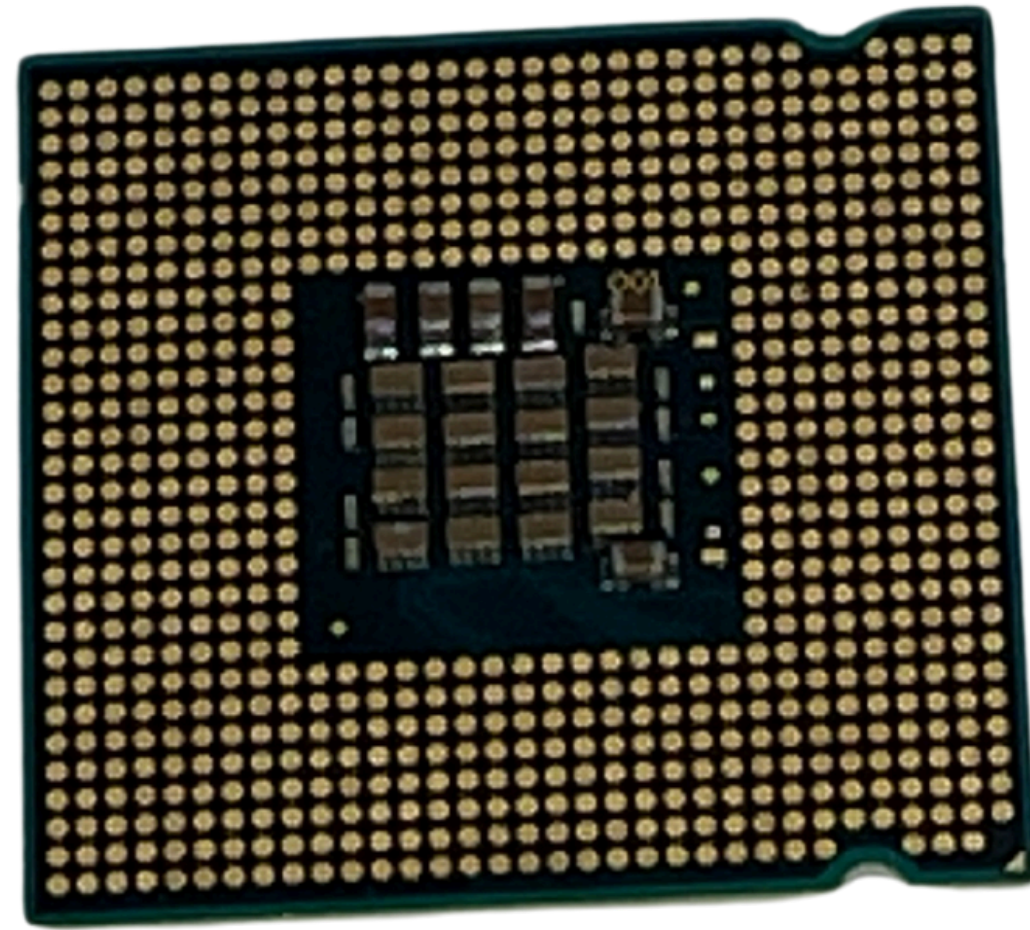
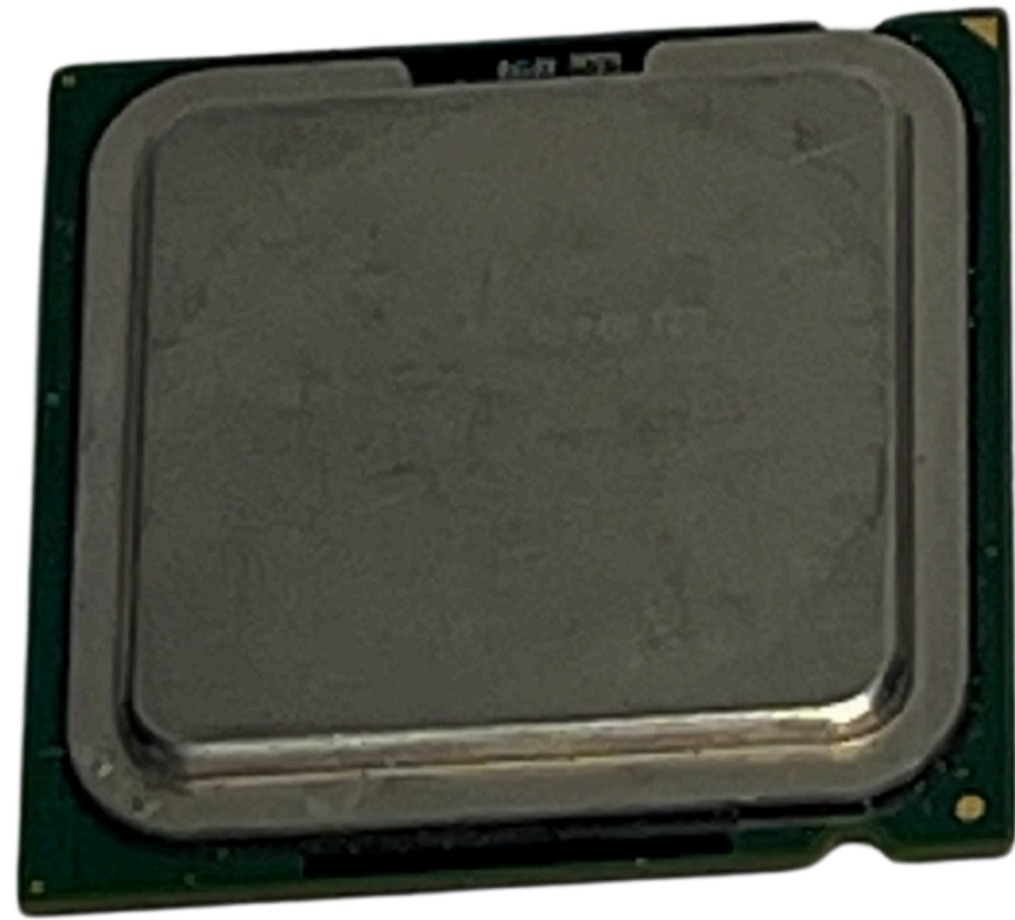
100-12TV OR
200-265V
97-63Hz

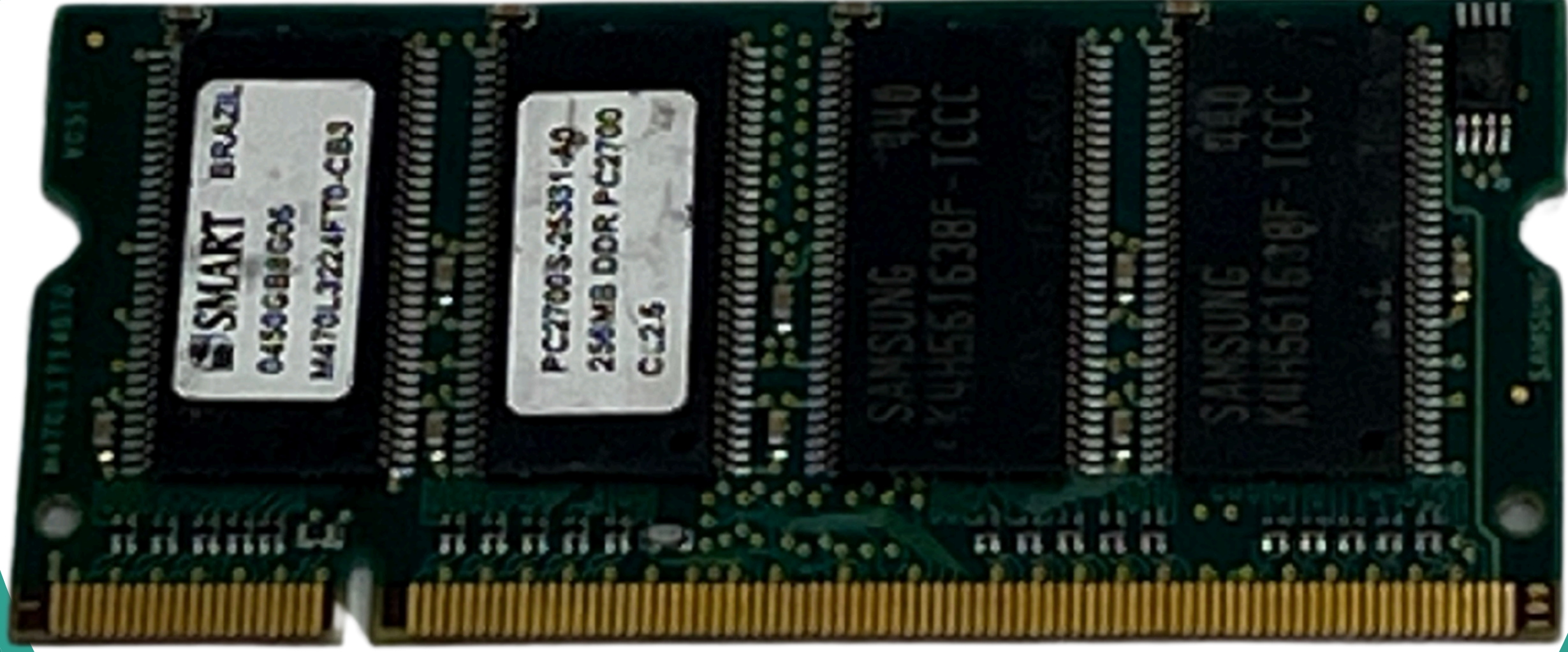
100-12TV OR
200-265V
97-63Hz











SMART BRAZIL
0450GB8G05
M470L3224FT0-CB3

PC2700S-25331-A0
256MB DDR PC2700
CL26

SAMSUNG 240
2KH561638F-1CCC

SAMSUNG 240
2KH561638F-1CCC

**Revisando
as aulas
anteriores...**

**O que está
errado?**

























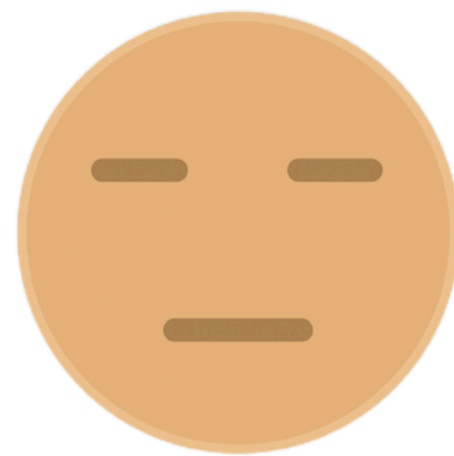




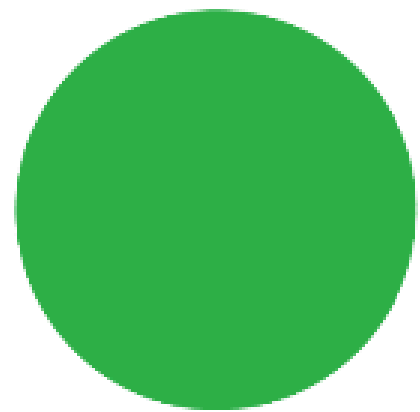


Perguntas...

Avaliação

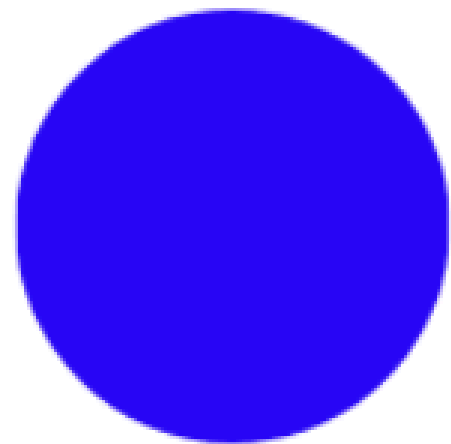


Você gostou das dinâmicas?



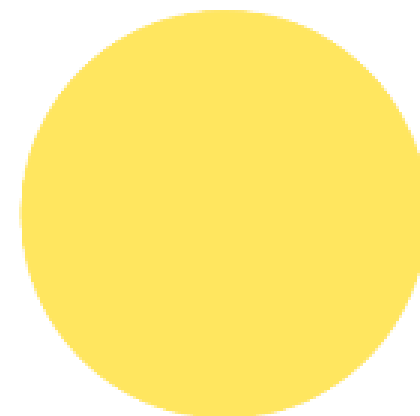
Gostei Muito

A



Gostei

B



Mais ou menos

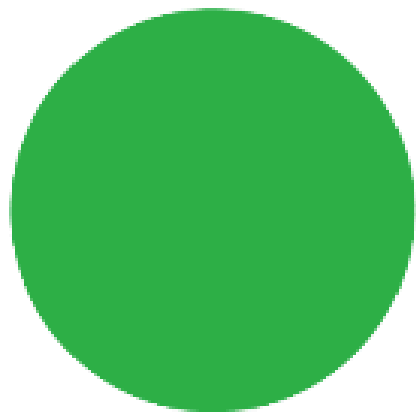
C



Não gostei

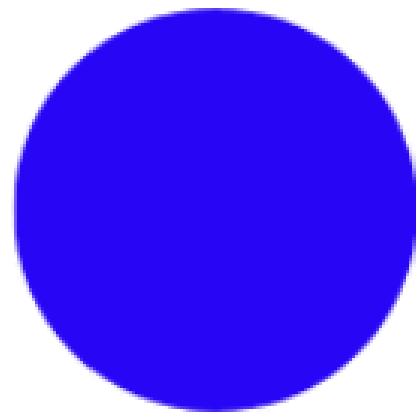
D

Você acha que o curso contribuiu para sua cooperativa?



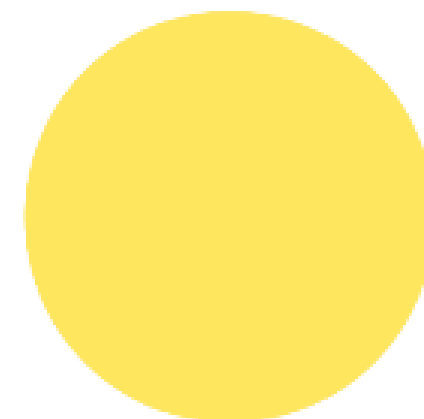
Gostei Muito

A



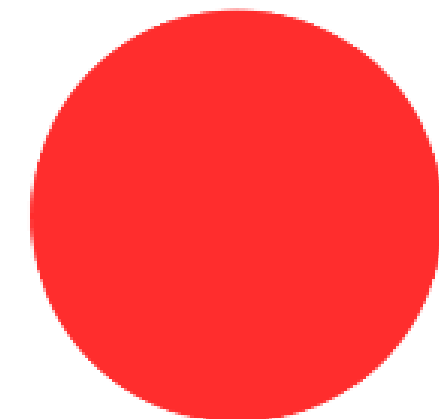
Gostei

B



Mais ou menos

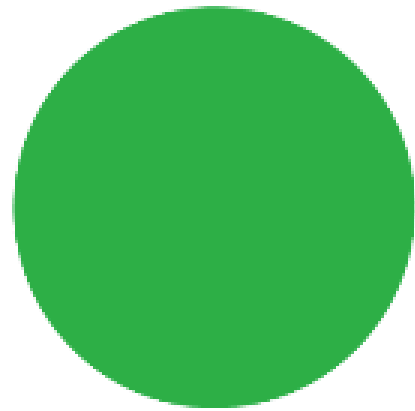
C



Não gostei

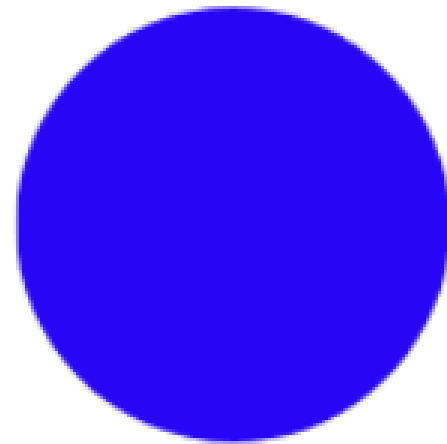
D

Você acha que aprendeu a trabalhar de forma correta na desmontagem, separação e vendas das peças dos equipamentos (CPU, Notebooks, impressoras, telefonia e acessórios)?



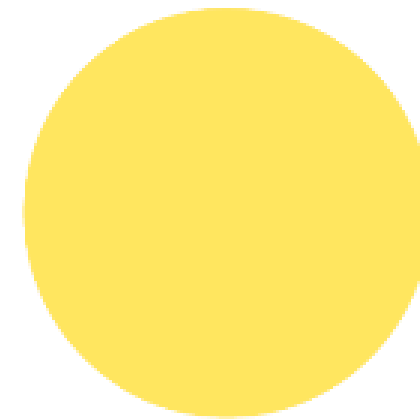
Gostei Muito

A



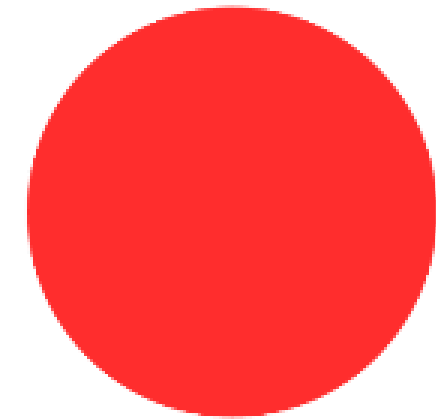
Gostei

B



Mais ou menos

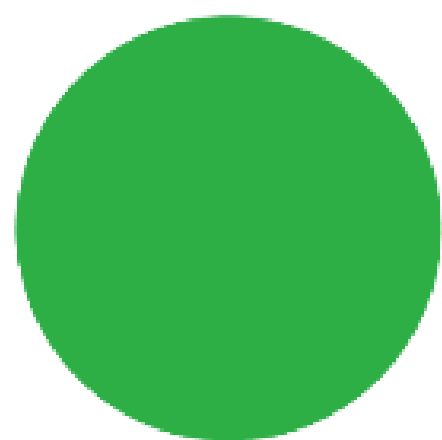
C



Não gostei

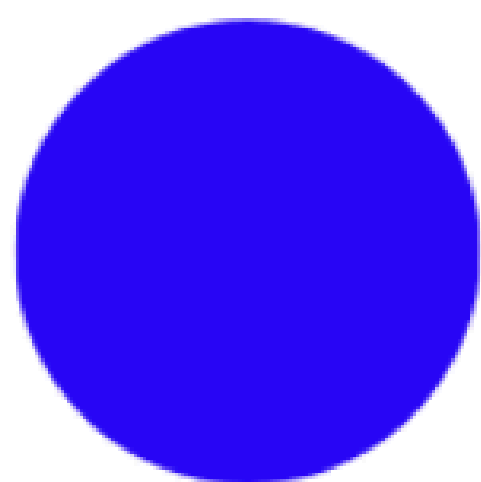
D

Você acha que aprendeu o que se deve fazer com monitores de computadores?



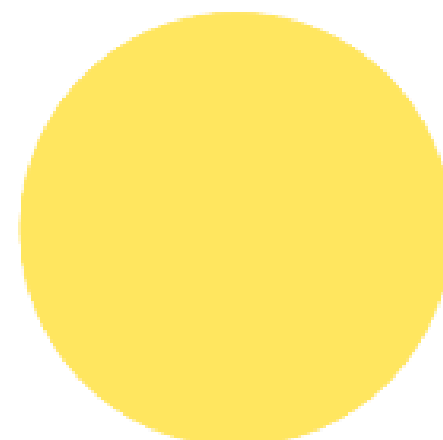
Gostei Muito

A



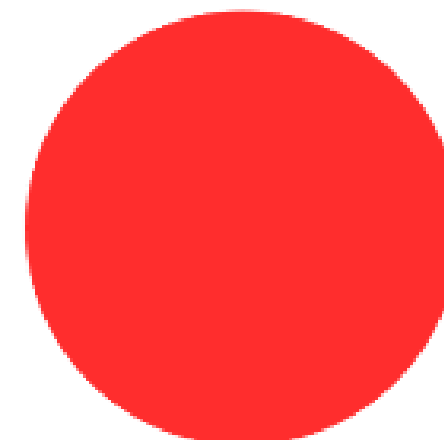
Gostei

B



Mais ou menos

C



Não gostei

D

Muito Obrigado!

Realização



Parceria



Apoiador Financeiro

