

# CURSO DE DESTINAÇÃO DE RESÍDUOS ELETROELETRÔNICOS

Edição Rio Branco

Realização



Parceria



Apoiador Financeiro

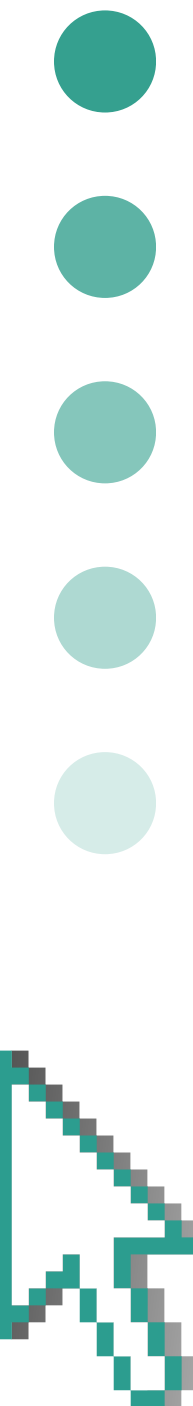
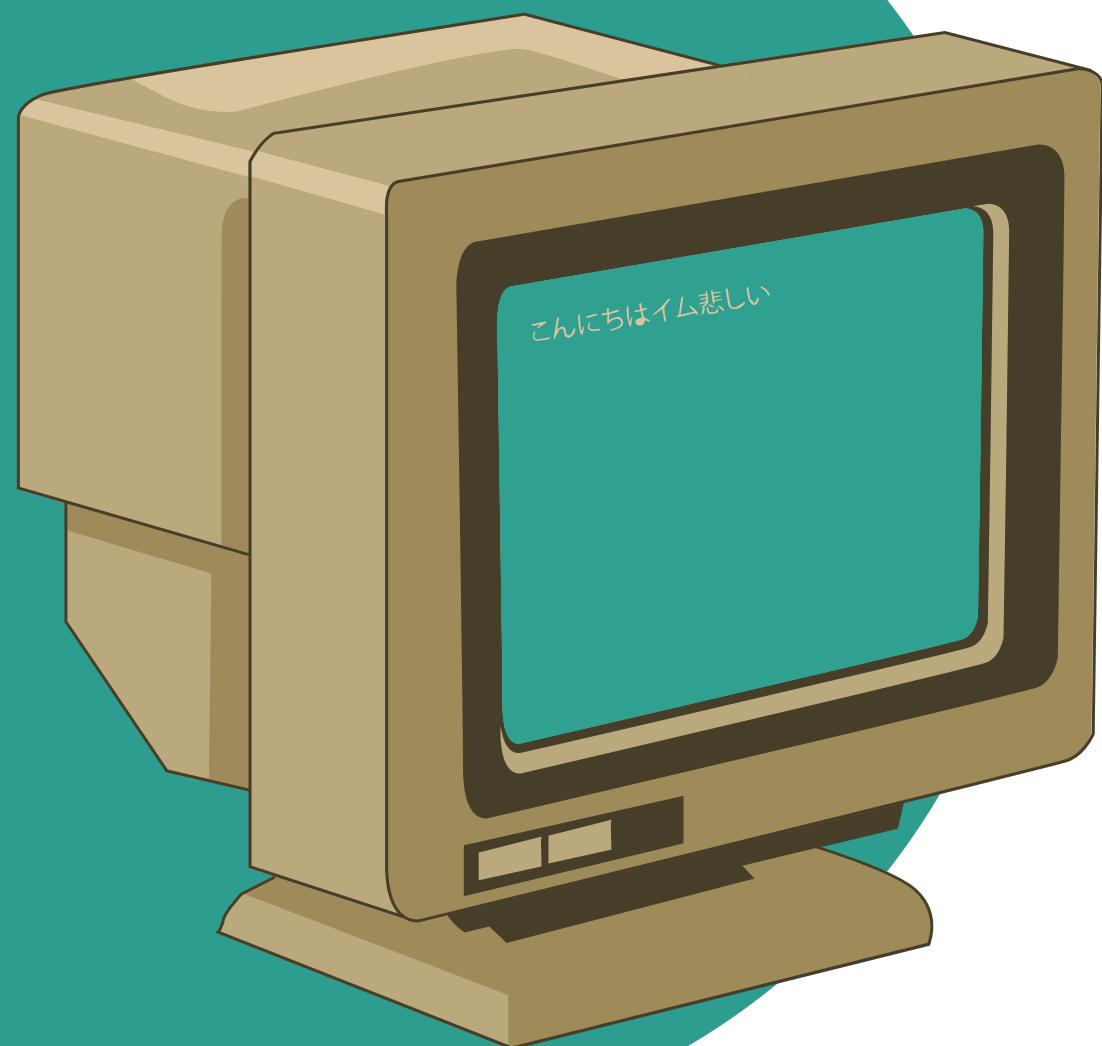


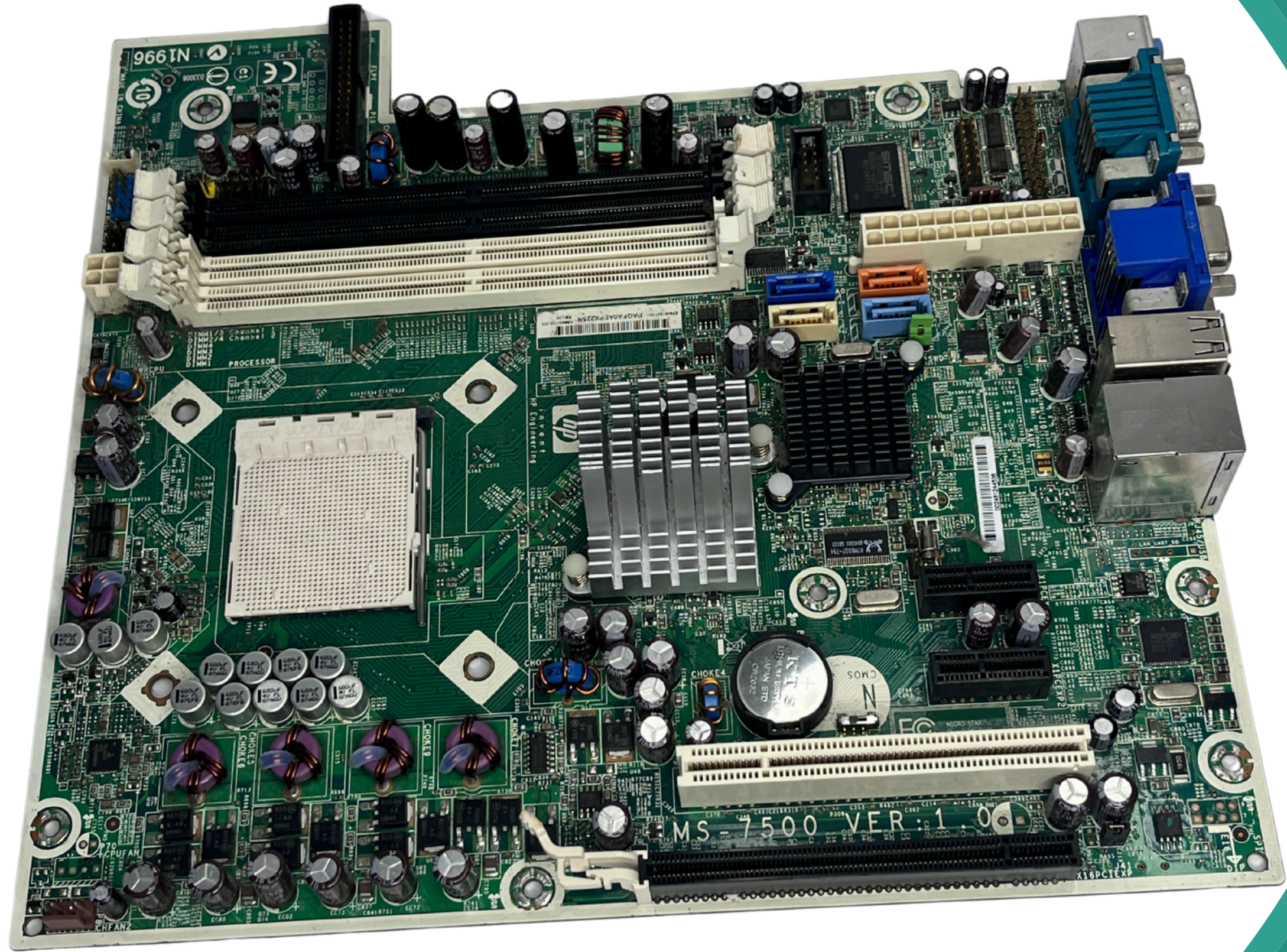
# AULA 03

Desmontagem  
e Revisão



# Gincana da Classificação







DISK DRIVE MK2018GAP  
HDD2164 H ZE01 T  
DC+5V 0.7A

検磁 3902B564

UL E145163 SP LR39635



S/N 82755575T 2W4 EC.A



8455MB (CYL16383, H16, S63)  
20.006B (LBA 39,070, 080Sectors)

TOSHIBA CORPORATION  
MADE IN PHILIPPINES

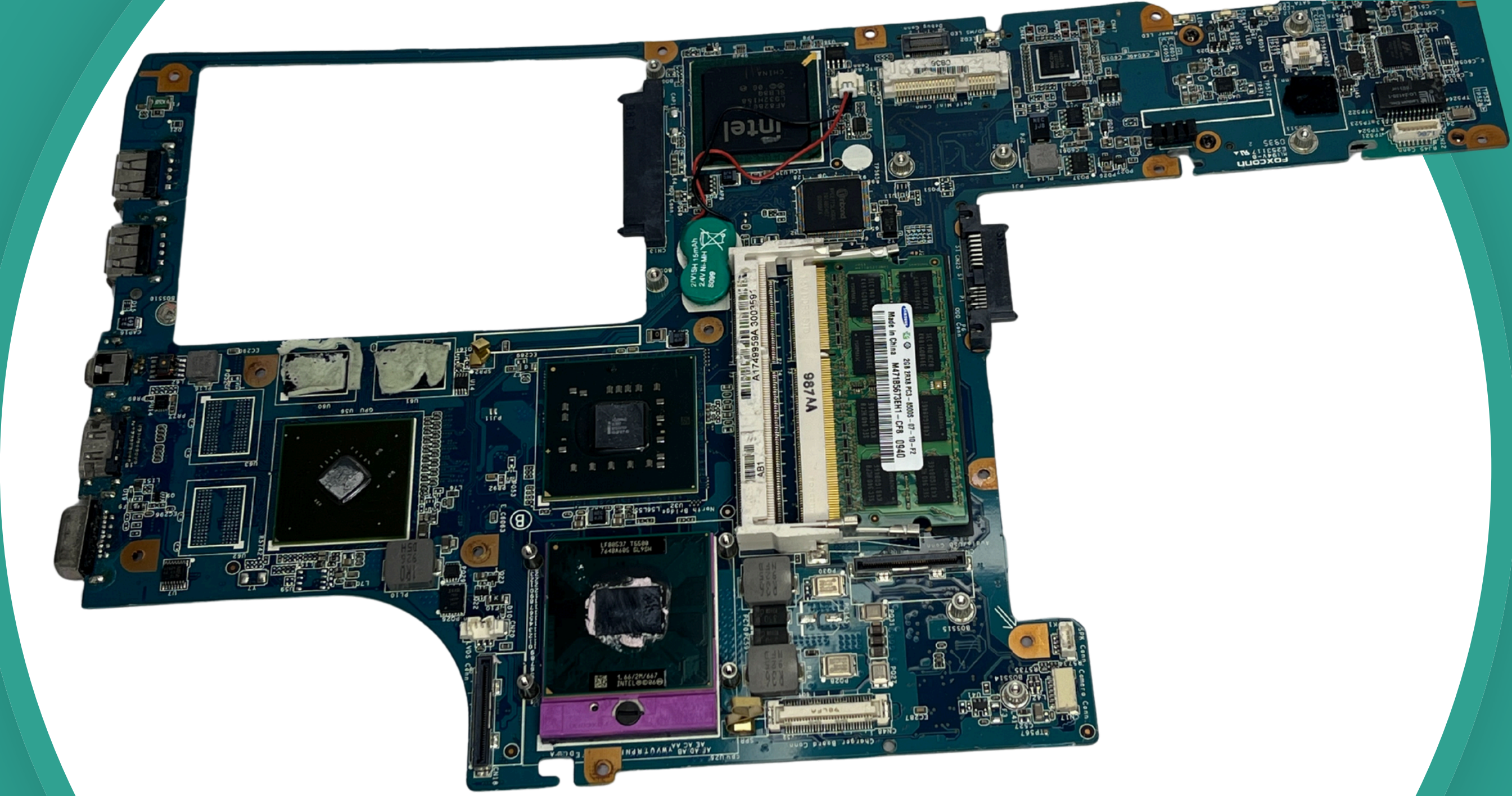
**CAUTION**  
DO NOT DISASSEMBLE OR MODIFY.  
DO NOT REMOVE ANY LABELS.  
DO NOT PUSH ON THE TOP COVER.  
HANDLE ONLY BY SIDES OF BASE.  
AVOID GIVING SHOCK.  
DO NOT COVER BREATHING HOLE.  
RATTLE NOISE IS NORMAL.

PRODUCT COVERED OR LICENSED  
UNDER ONE OR MORE OF THE  
FOLLOWING PATENTS:  
4,566,046 4,926,275 4,930,029  
4,988,933 5,270,878 5,285,330  
5,319,508 5,327,052 5,355,260  
5,386,402 5,432,414 5,490,022  
5,572,382 5,585,701 5,671,099  
5,677,811 5,729,405 5,751,519  
5,799,145 5,801,897 5,847,890  
4,686,622 4,896,260 4,942,516

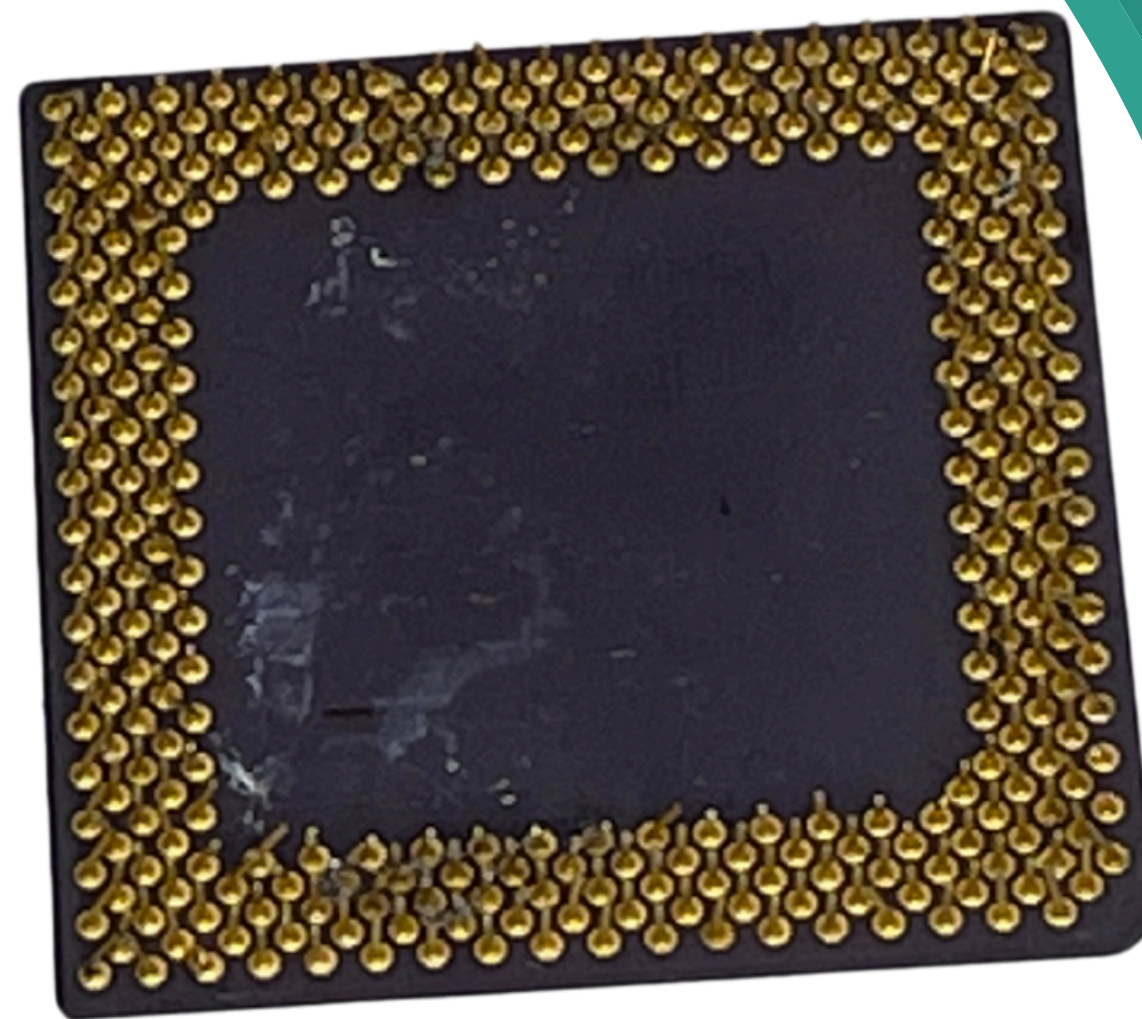
K00C825060WK233

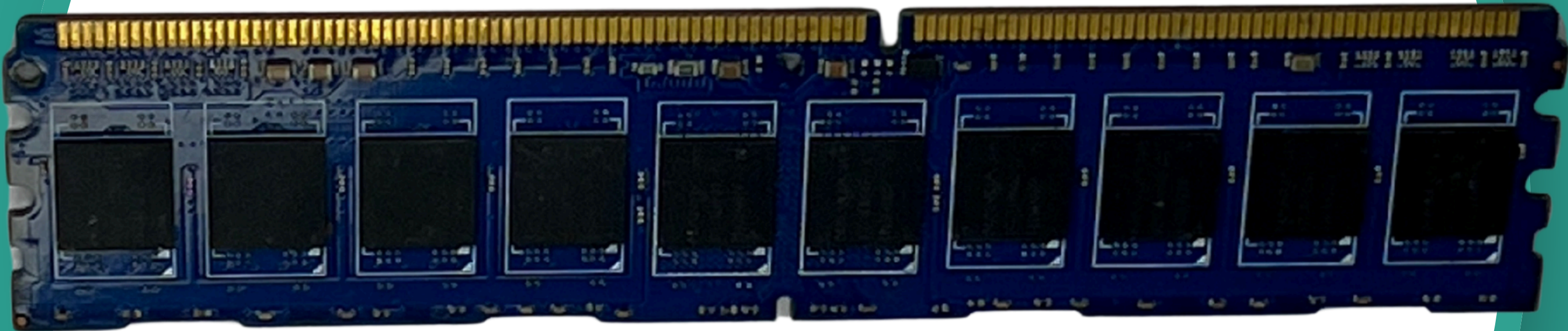
34C23301-400

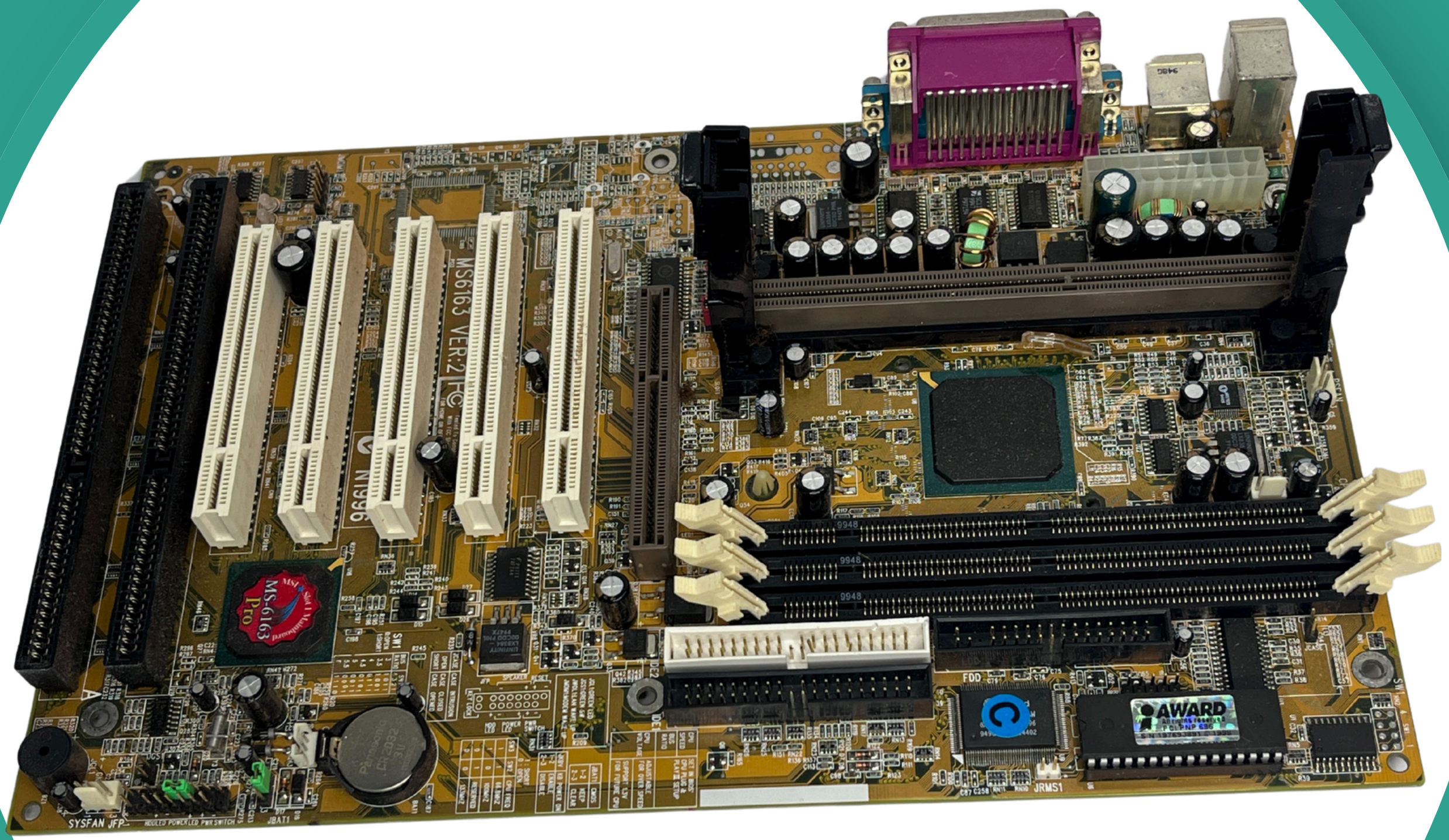


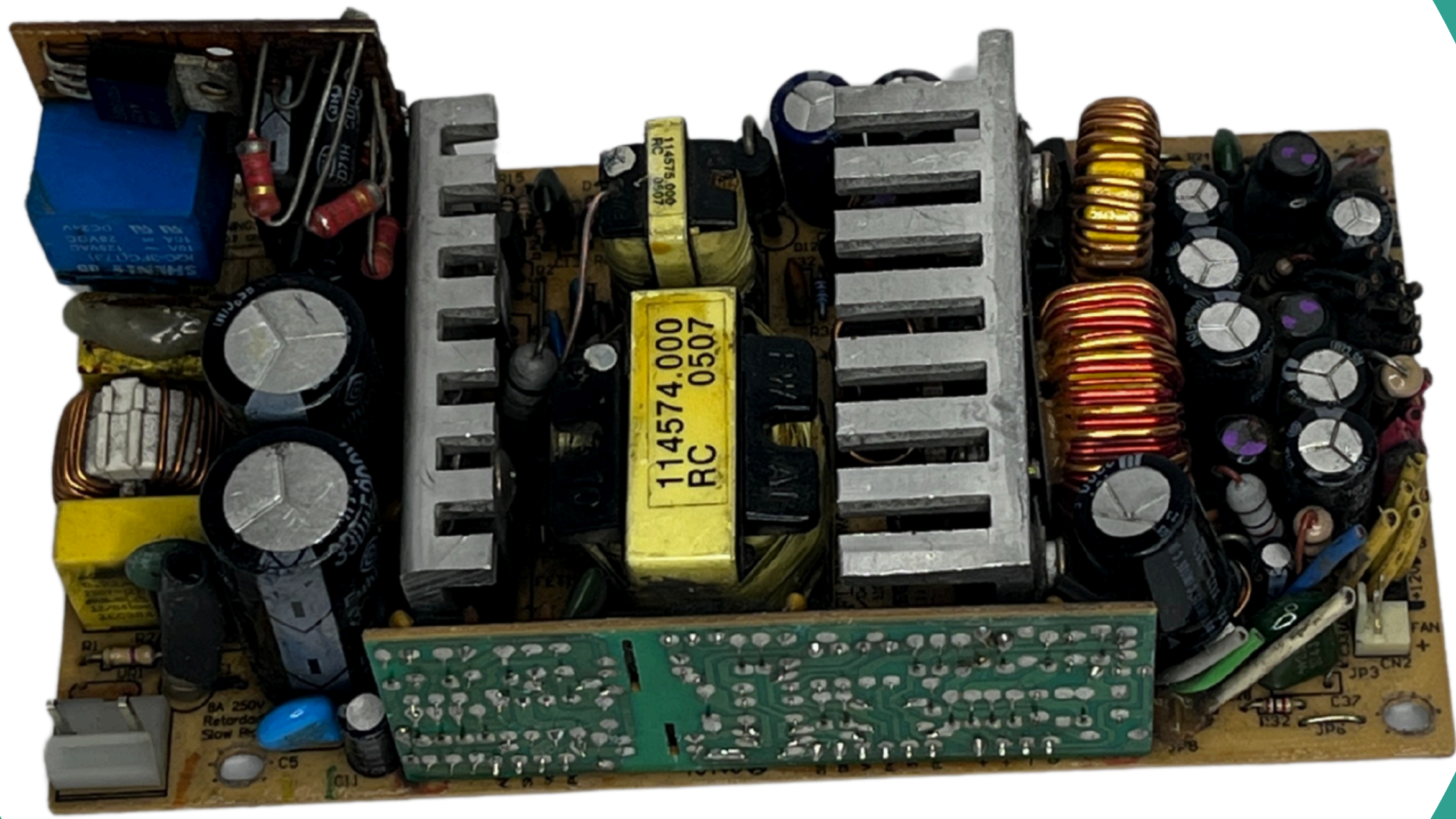


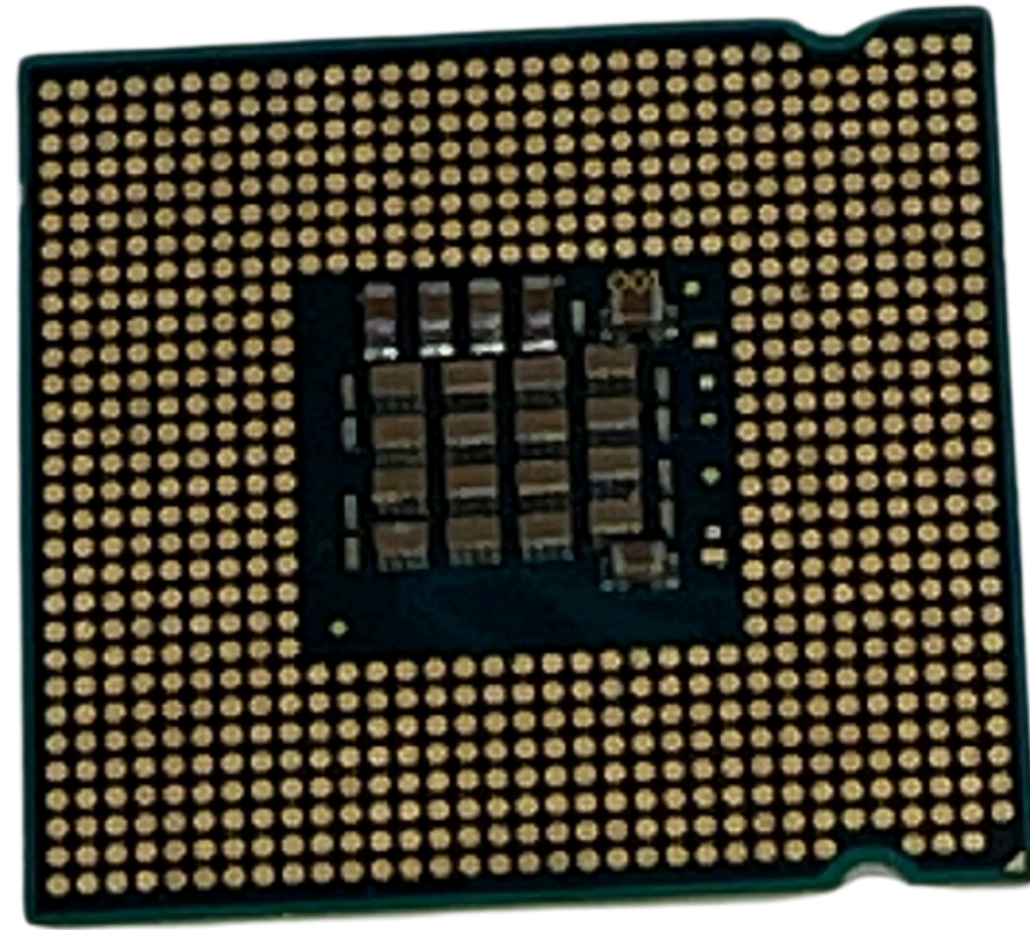


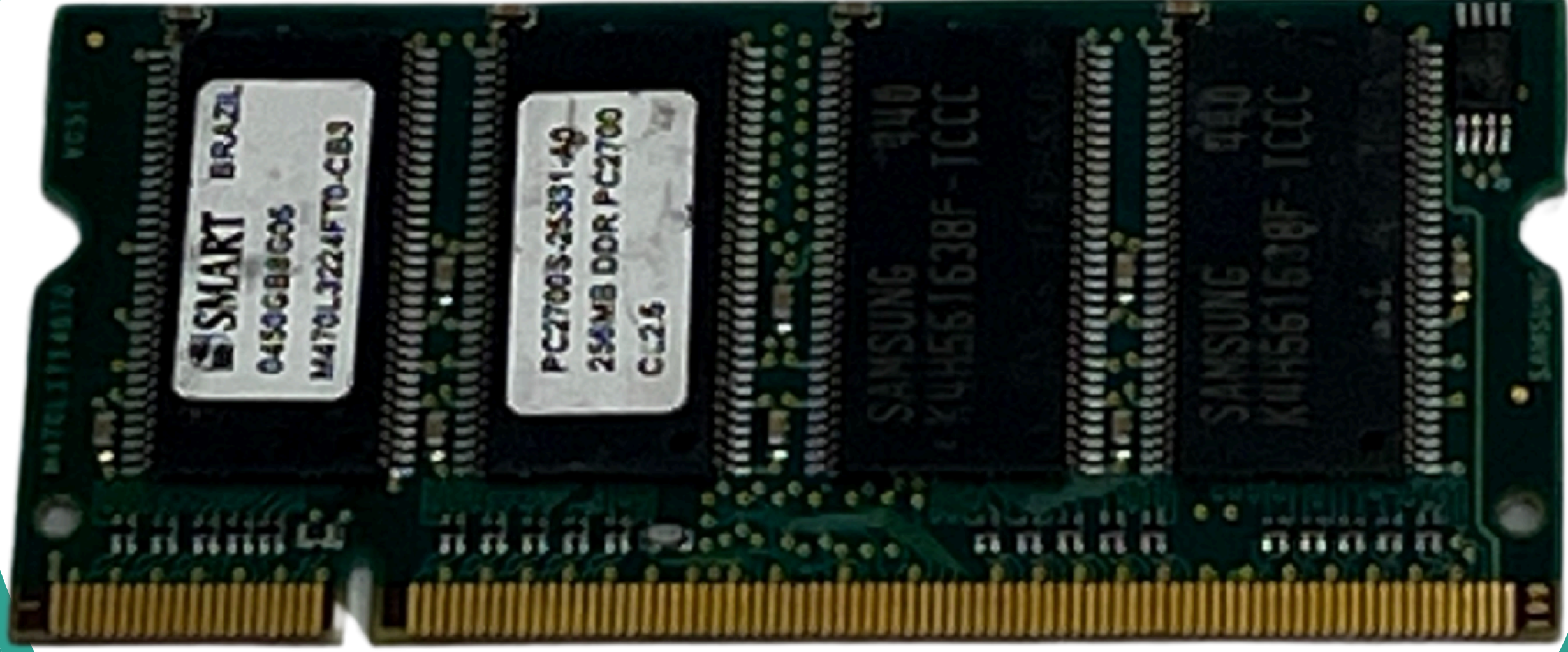












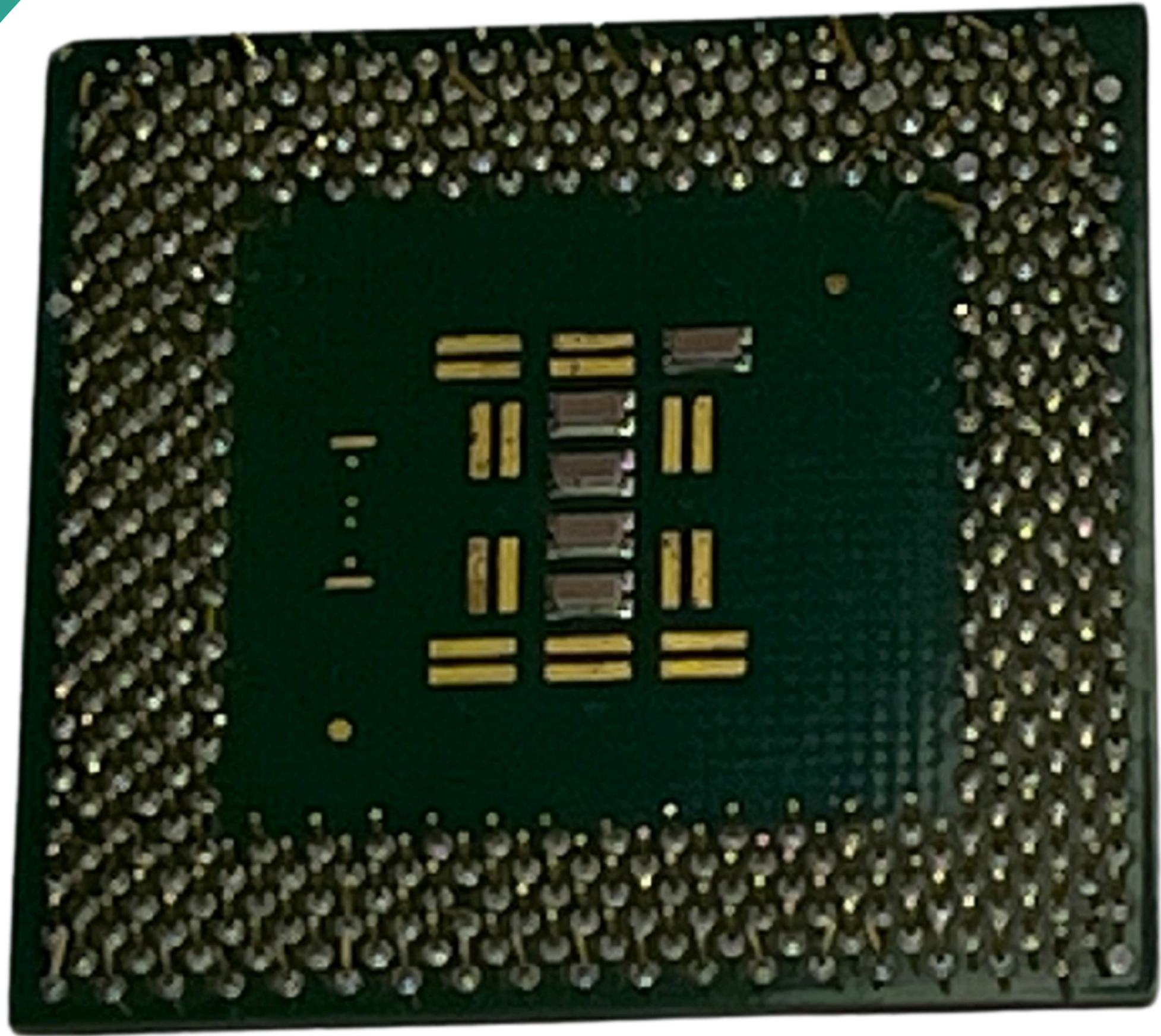
SMART BRAZIL  
0450GB8G05  
M470LJ224FT0-CB3

PC2700S-25331-A0  
256MB DDR PC2700  
CL2.6

SANSUNG 940  
K4H561638F-1CCC

SANSUNG 940  
K4H561638F-1CCC





**Revisando  
as aulas  
anteriores...**

**O que está  
errado?**

























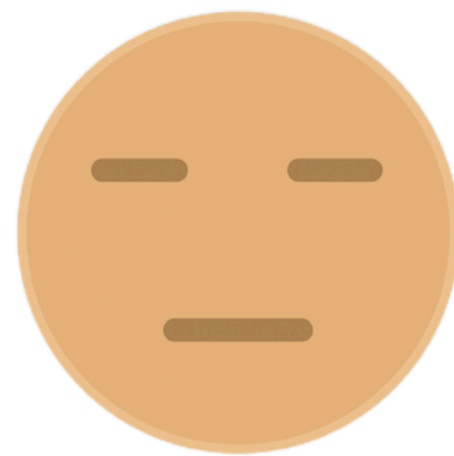




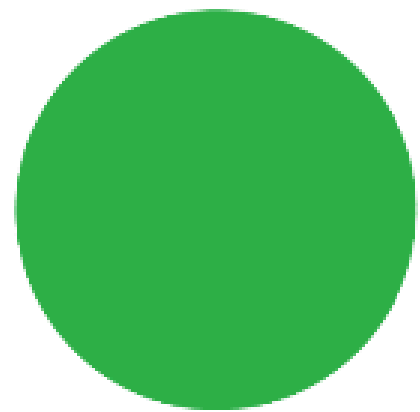


**Perguntas...**

# Avaliação

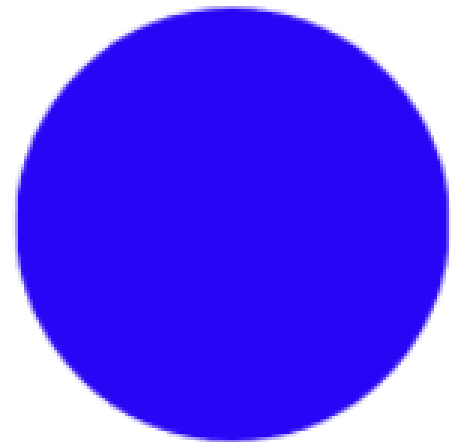


# Você gostou das dinâmicas?



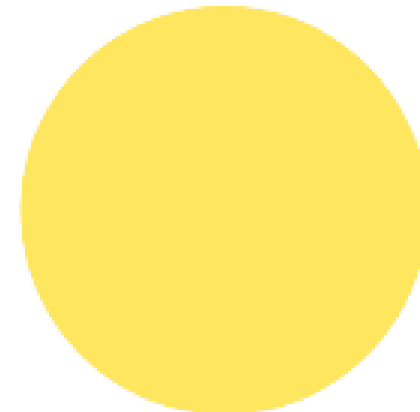
**Gostei Muito**

**A**



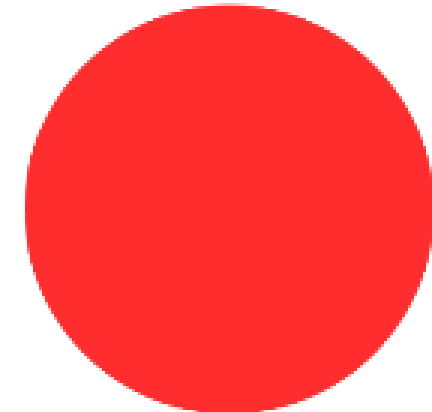
**Gostei**

**B**



**Mais ou menos**

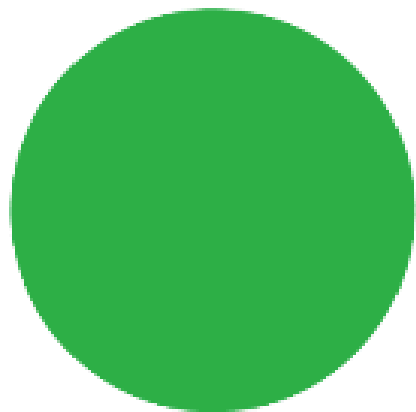
**C**



**Não gostei**

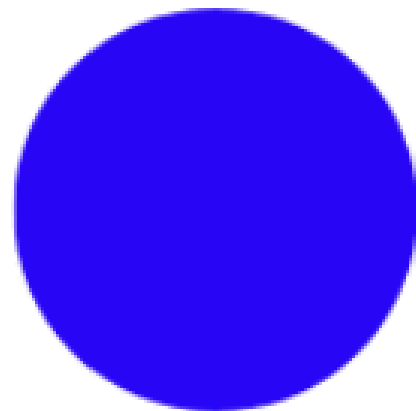
**D**

# Você acha que o curso contribuiu para sua cooperativa?



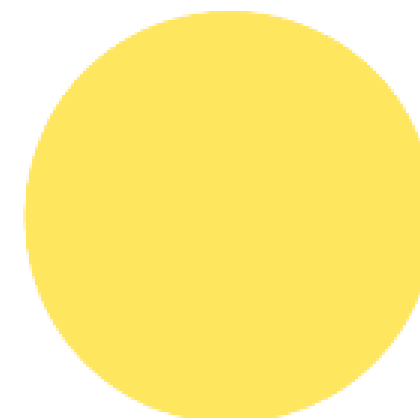
**Gostei Muito**

**A**



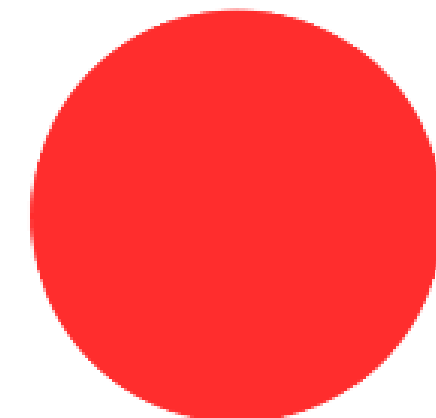
**Gostei**

**B**



**Mais ou menos**

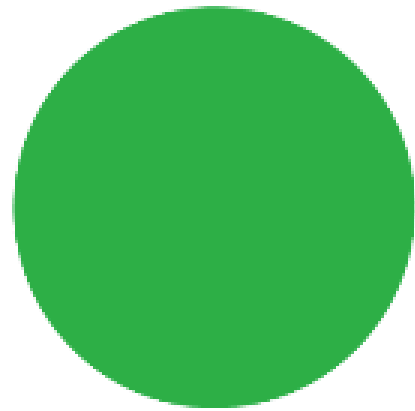
**C**



**Não gostei**

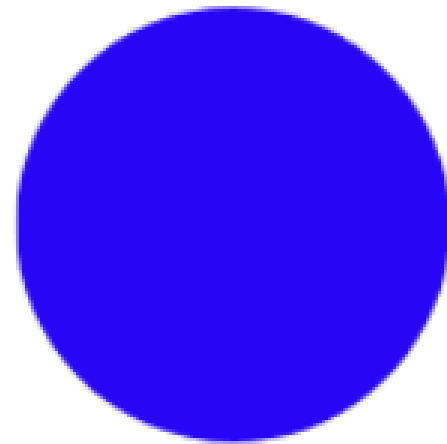
**D**

**Você acha que aprendeu a trabalhar de forma correta na desmontagem, separação e vendas das peças dos equipamentos (CPU, Notebooks, impressoras, telefonia e acessórios)?**



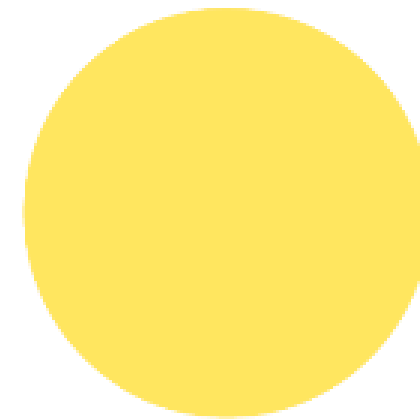
**Gostei Muito**

**A**



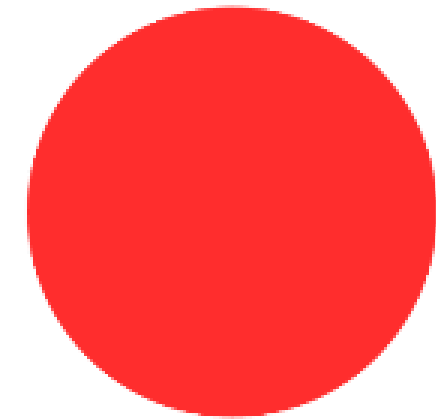
**Gostei**

**B**



**Mais ou menos**

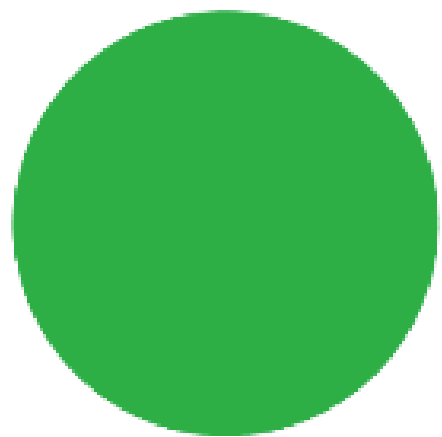
**C**



**Não gostei**

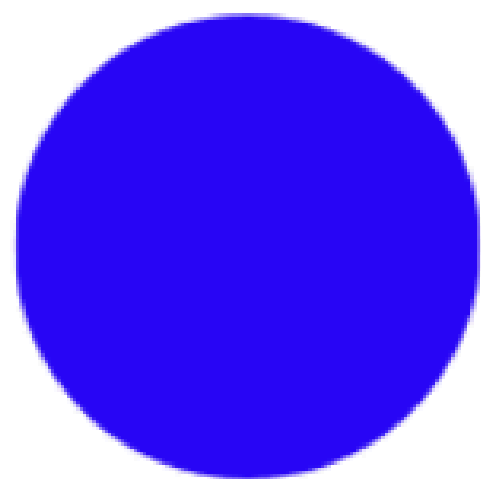
**D**

# Você acha que aprendeu o que se deve fazer com monitores de computadores?



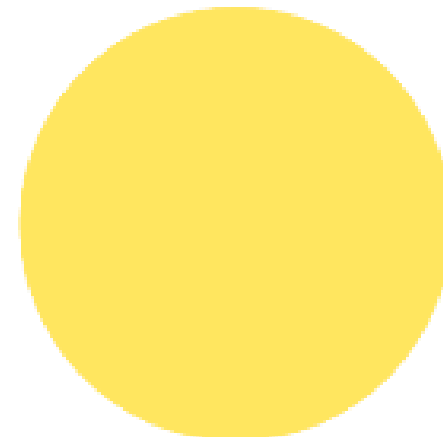
**Gostei Muito**

**A**



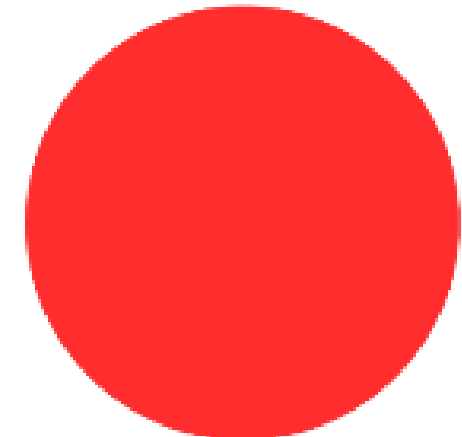
**Gostei**

**B**



**Mais ou menos**

**C**



**Não gostei**

**D**

# Muito Obrigado!

Realização



Parceria



Apoiador Financeiro

